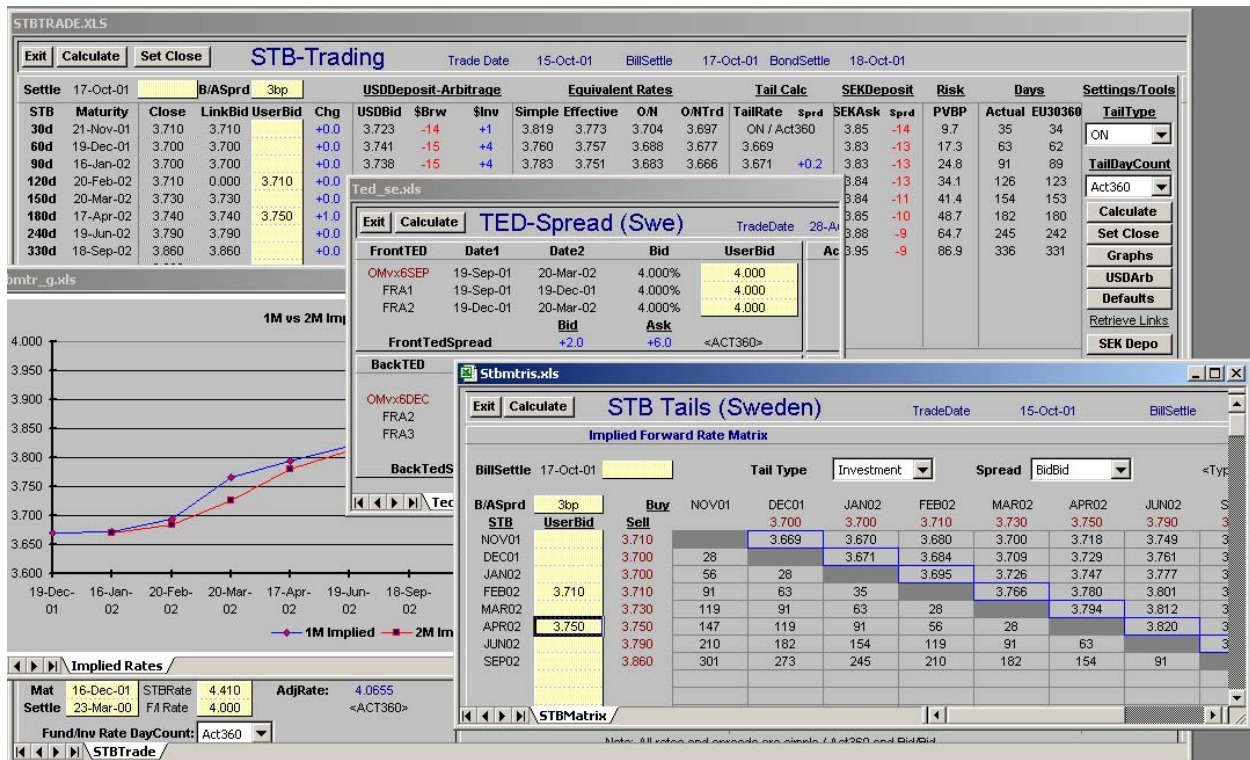


Product brief

MarketWatch

Fixed-income analysis in real-time

The financial markets of today are working at a faster pace than ever before and the ability to extract and absorb essential market information in real-time is vital. MarketWatch 3.0 is the latest release of our sophisticated and market-proven tool for analyzing and monitoring the financial markets in real-time.



"MarketWatch is an indispensable tool for our market making and trading in corporate bonds."

Anders Hjorth
Trading Portfolio Manager
Corporate Bonds
SEB Merchant Banking

"MarketWatch is a very good and cost efficient tool for our interest rate analysis."

Peter Gustafsson
Fixed Income
Robur

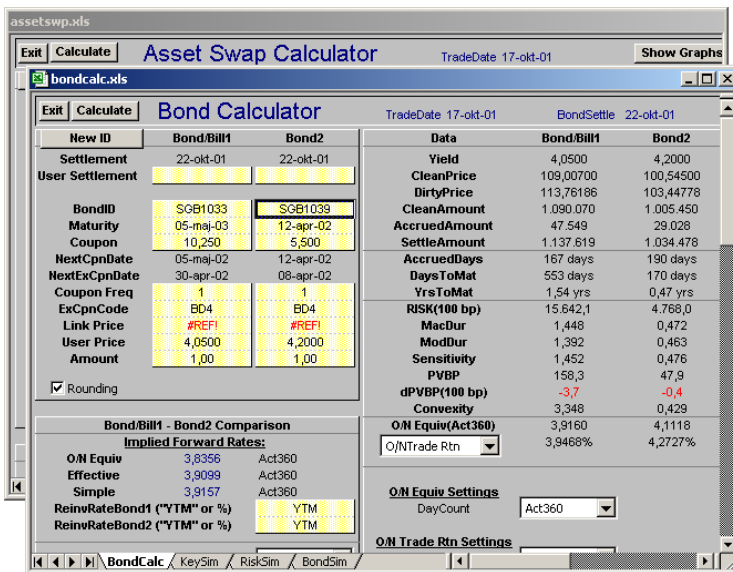
Key concepts

The power of MarketWatch resides in its analytical engine combined with a market-proven real-time presentation of the analysis. MarketWatch has been designed in close interaction with active market participants. Users of MarketWatch can therefore rely upon the system being a reflection of current market practices, with all the information being presented from a trader's perspective.

Besides providing an extensive range of proprietary analytics and optimization tools, the system also includes full coverage of all standard money market, bond, foreign exchange and futures calculations.

MarketWatch 3.0 is available for Microsoft Excel 97 (8.0) or later, running on Microsoft NT 4.0 or Windows 2000

Product brief – MarketWatch



Width and depth

MarketWatch is designed to suit a wide spectrum of organizations equally well. By adhering closely to available and emerging industry standards, the system adopts easily to customer policy.

The trading modules are intended to give a comprehensive and compact view of the important information for a certain market segment, focusing on monitoring the relevant arbitrage relationships and market spreads.

The five instrument modules contain more than 90 instrument related calculators covering a wide variety of in-depth fixed-income analytics.

Key features

Trading

- Generic trading pages*
- Customized Nordic pages*
- International yield curve and spread comparison*

Bill/MM

- Tail yield comparison*
- Arbitrage via FX markets*
- TED-spreads*
- Repos*
- FRA/Future strips*
- O/N-rate simulator*
- Commercial paper calculator*

Bond

- Tail yield comparison*
- Spot and forward curve analysis*
- Spread analysis*
- Term structure modeling*
- Barbell/ Bullet*
- Repos*
- Horizon analysis*
- Index linked bonds*
- Hedge calculations*

Futures

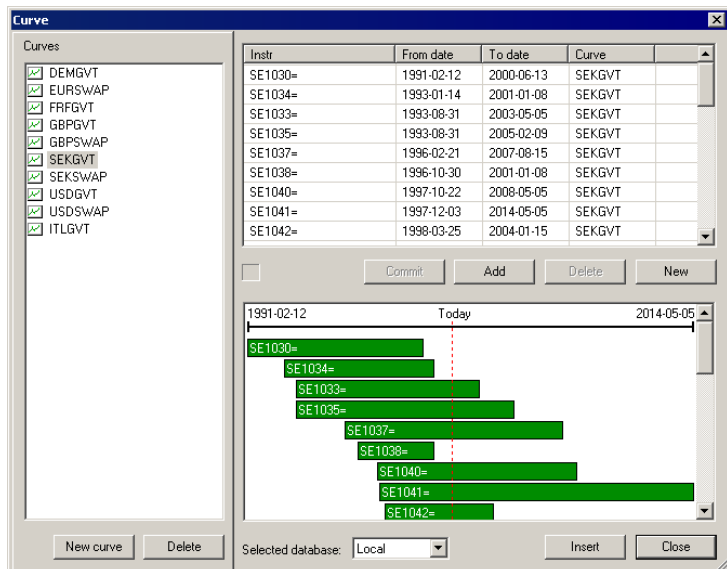
- OM-futures*
- Price factor style futures*
- Forwards*
- Arbitrage calculations*
- Fwd/Fwd calculators*

FX

- Arbitrage calculations*
- FXCross/FXSwap calculators*

Options

- Bond options*
- Bond futures options*
- Strategy calculations*



Easy static data maintenance

Since correct maintenance of static instrument data is one of the keys to relevant analysis results, Market Watch is built around an extensive database of market information which is used to facilitate calculations in all parts of the program. The database resides in a relational database such as Microsoft SQL Server, Oracle or Sybase which is shared by all MarketWatch users in an organization.

The database includes both actual definitions of fixed income instruments on the market, as well as instrument curves and generic definitions of bills and futures which are constantly issued according to certain rules. Hence the system is able to calculate most market dates by itself and thereby reduces the possibility of miscalculation due to an input error.

**Algorithmica
Research AB**

Address:
Hamngatan 13
111 47 Stockholm
Sweden

Telephone:
+46 8 678 09 90
Telefax:
+46 8 678 09 95

URL :
<http://www.algorithmica.se>